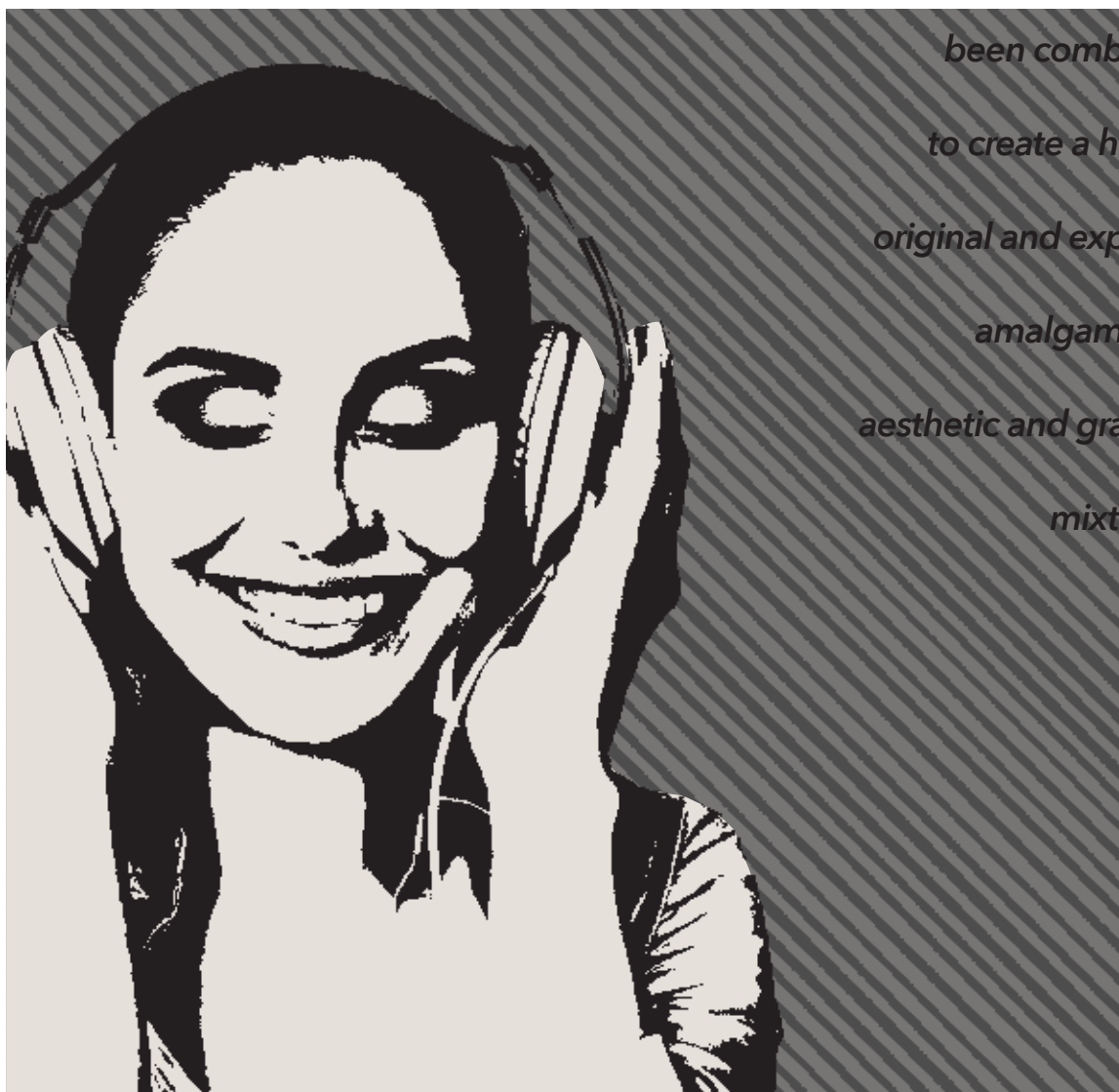


# STONCRETE



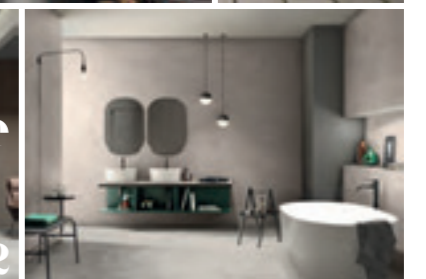
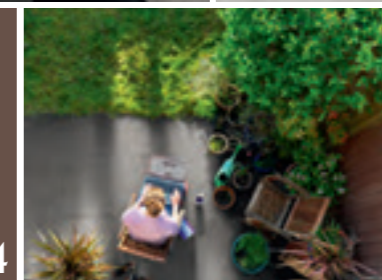
*[ Here, two different  
starting points, stone  
and concrete, have*

*been combined  
to create a highly  
original and expertly  
amalgamated  
aesthetic and graphic  
mixture. ]*





OUTDOOR  
10mm  
THICKNESS  
20mm





# STONCRETE

## Two in one

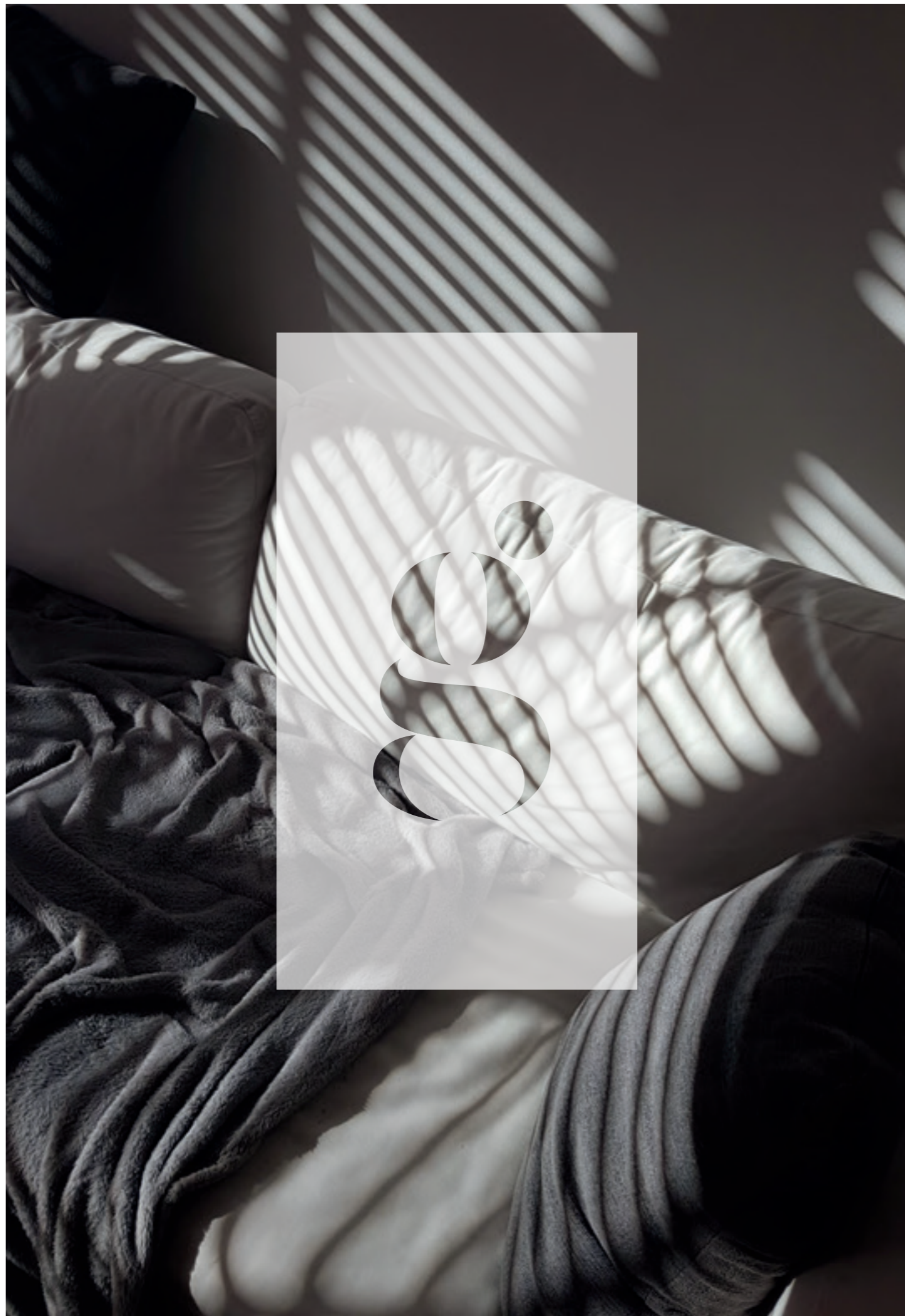
**Un gusto morbido e contemporaneamente forte che si addice sia a coloro che sono alla ricerca di una soluzione pietra non fortemente caratterizzata, sia per chi sta cercando un effetto cemento non banale.**

**Stoncrete volutamente si posiziona in un'area di gusto molteplice, da una parte la pietra e dall'altra il cemento, per rispondere a esigenze estetiche differenti, rappresentando così una soluzione adatta per più contesti, residenziali e non, garantendo una piena continuità tra indoor e outdoor.**

---

The resulting style is both gentle and strong, which makes it ideal for anyone looking for a subtle stone solution or an original concrete effect.

Stoncrete is deliberately positioned in a multiple taste area that includes both stone and, concrete, in order to meet different style requirements. This makes it a solution that can adapt to a wide range of residential and non-residential contexts as well as guaranteeing complete continuity between indoors and outdoors.





STCR 12G RM  
STCR R60G RM



STCR 12G RM



STCR2 90AG RM





STCR 90AG RM



STCR 12AG RM

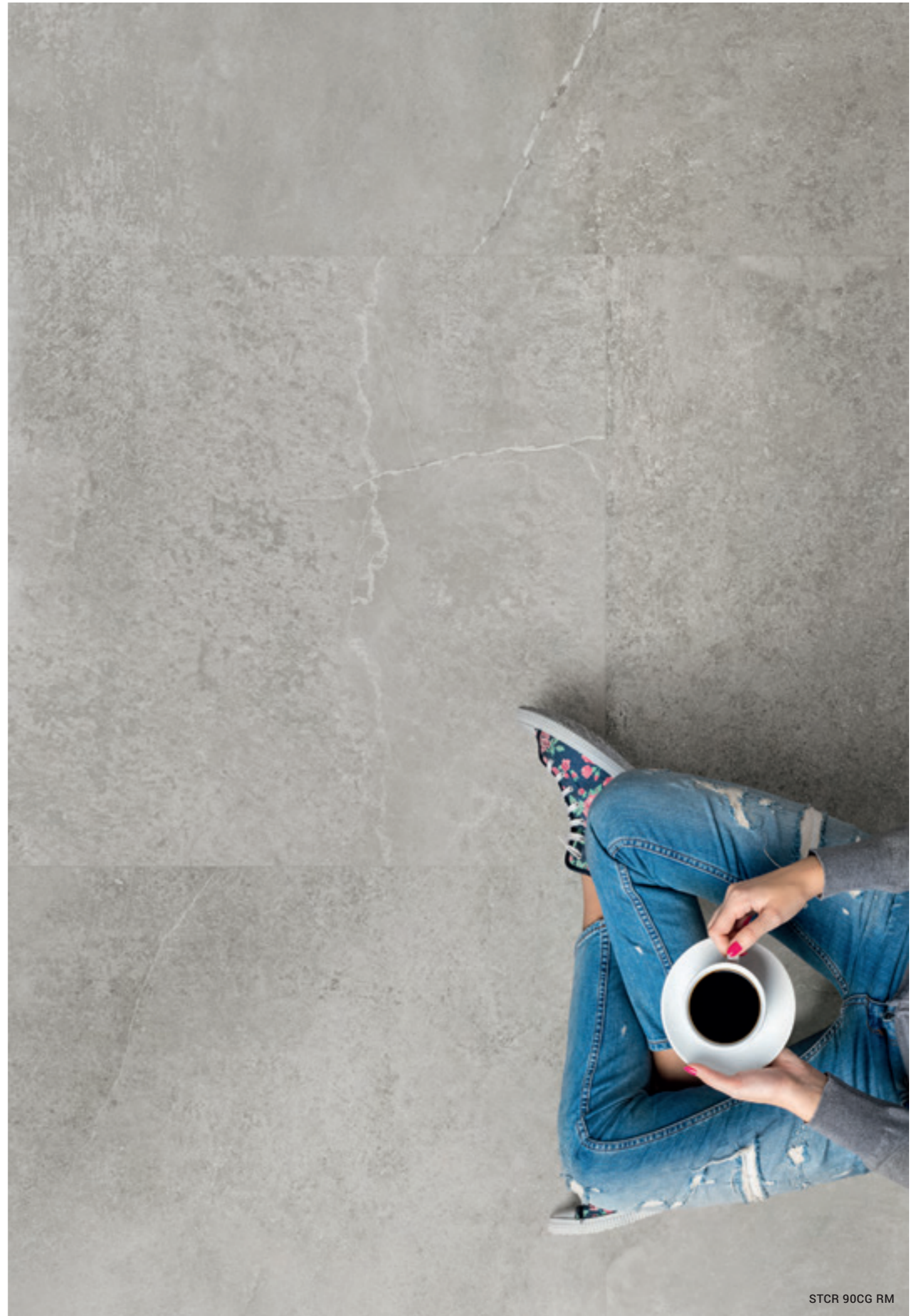


STCR DK12CG / RAME L0,5x15



STCR 12AG RM / STCR 12G RM















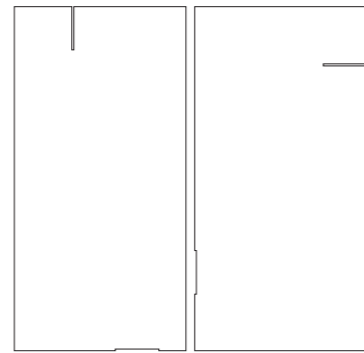
STCR 90DG RM



STCR 12DG RM



GRES PORCELLANATO A MASSA COLORATA  
COLOURED BODY PORCELAIN TILE

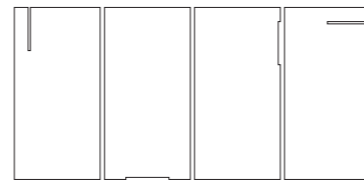


**STCR DK12CG**  
60X120-24"X48"



**TITANIO L0,5X15** △  
0,5X15-0,2"X6"

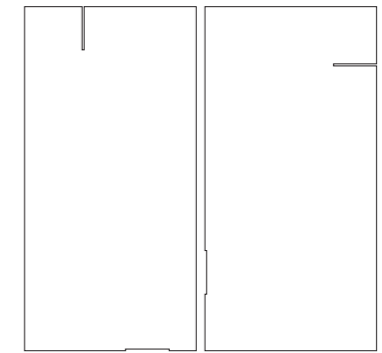
**OTTONE L0,5X15** △  
0,5X15-0,2"X6"



**STCR DK36CG**  
30X60-12"X24"



**RAME L0,5X15** △  
0,5X15-0,2"X6"

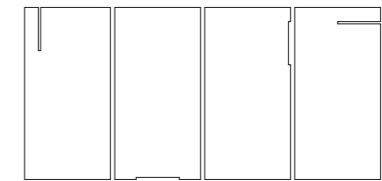


**STCR DK12AG**  
60X120-24"X48"



**TITANIO L0,5X15** △  
0,5X15-0,2"X6"

**OTTONE L0,5X15** △  
0,5X15-0,2"X6"



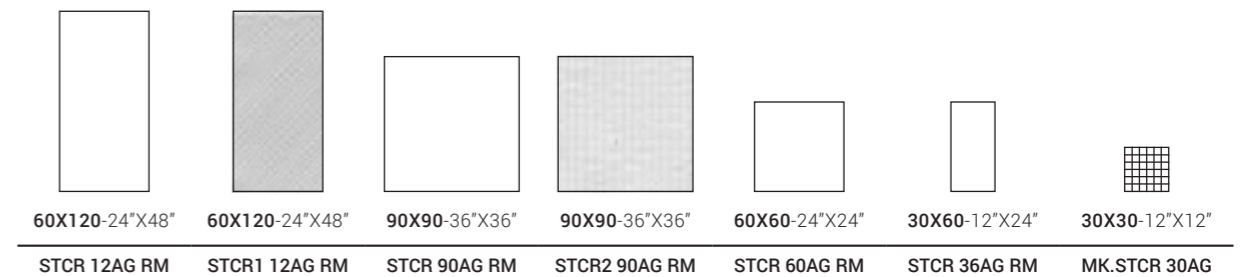
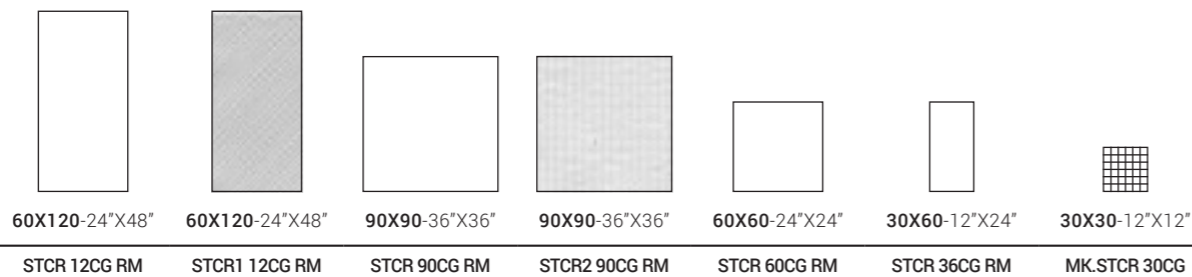
**STCR DK36AG**  
30X60-12"X24"



**RAME L0,5X15** △  
0,5X15-0,2"X6"

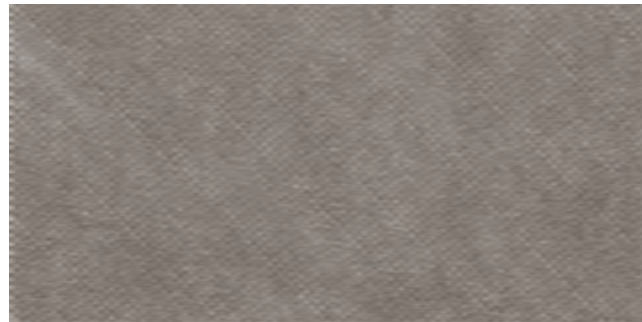
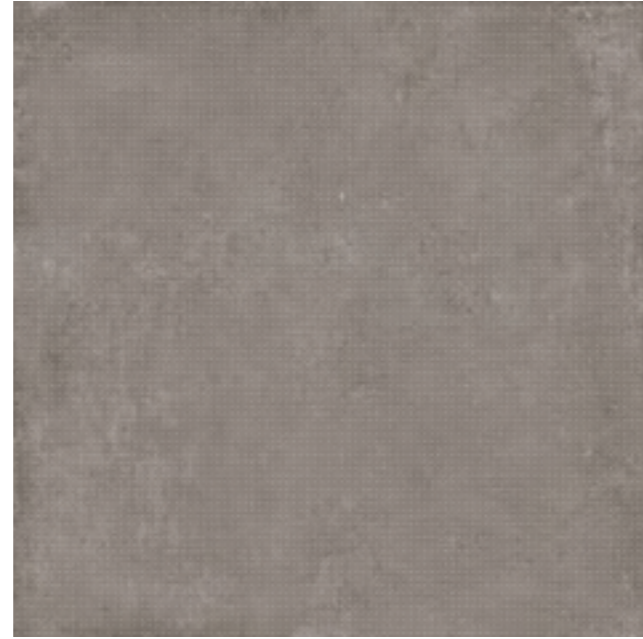
**CG**

**AG**

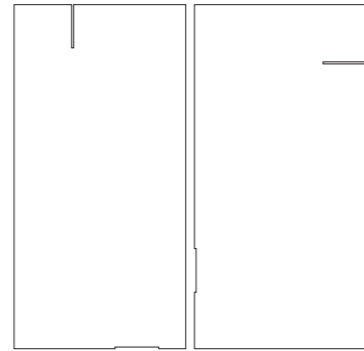




GRES PORCELLANATO A MASSA COLORATA  
COLOURED BODY PORCELAIN TILE



**G**

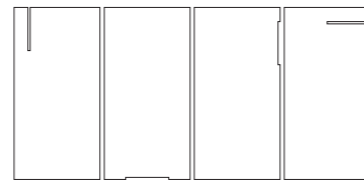


**STCR DK12G**  
60X120-24"X48"



**TITANIO L0,5X15** △  
0,5X15-0,2"X6"

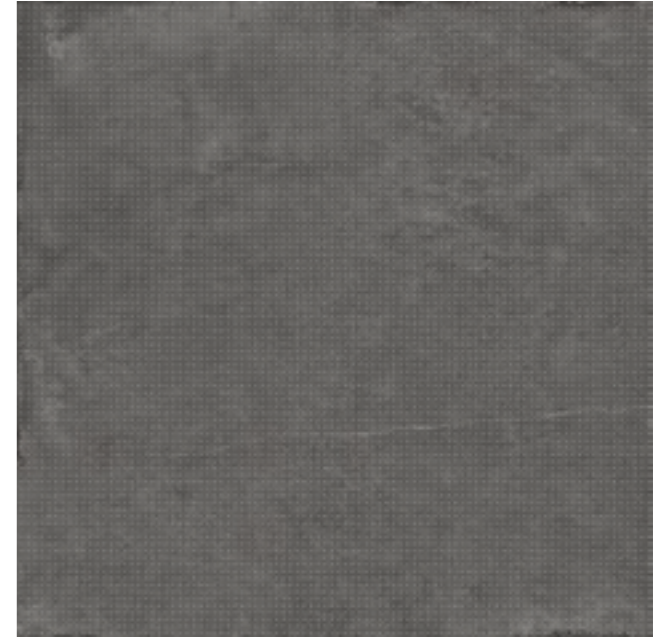
**OTTONE L0,5X15** △  
0,5X15-0,2"X6"



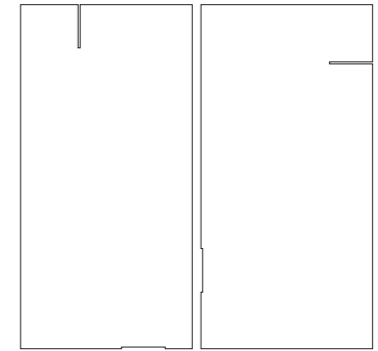
**STCR DK36G**  
30X60-12"X24"



**RAME L0,5X15** △  
0,5X15-0,2"X6"



**DG**

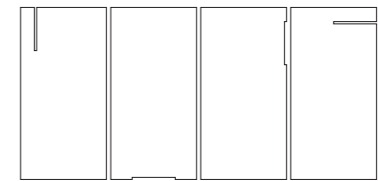


**STCR DK12DG**  
60X120-24"X48"



**TITANIO L0,5X15** △  
0,5X15-0,2"X6"

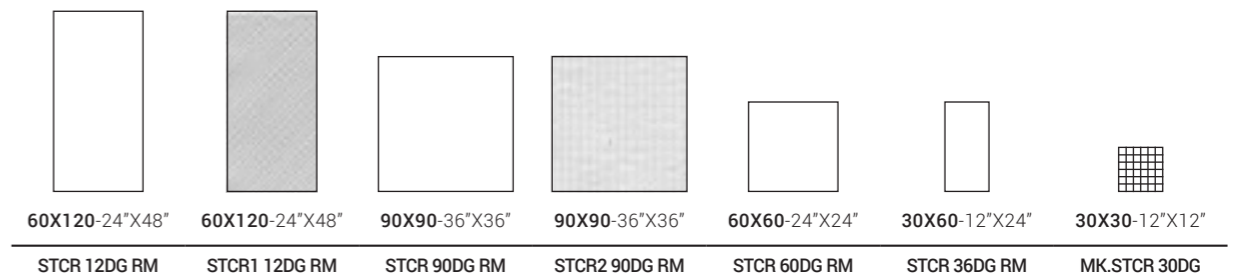
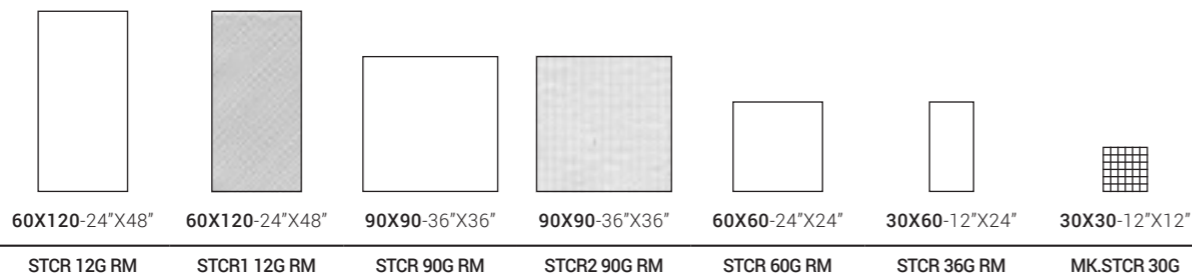
**OTTONE L0,5X15** △  
0,5X15-0,2"X6"



**STCR DK36DG**  
30X60-12"X24"



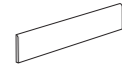
**RAME L0,5X15** △  
0,5X15-0,2"X6"



# STONCRETE

GRES PORCELLANATO A MASSA COLORATA  
COLOURED BODY PORCELAIN TILE

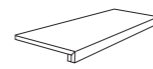
## PEZZI SPECIALI / SPECIAL PIECES



6X60-2.4"X24" △



6X90-2.4"X36" △



120X32,5-48"X12,8" △

CG	STCR BT60CG	STCR BT90CG	STCR G120CG
AG	STCR BT60AG	STCR BT90AG	STCR G120AG
G	STCR BT60G	STCR BT90G	STCR G120G
DG	STCR BT60DG	STCR BT90DG	STCR G120DG

## CARATTERISTICHE TECNICHE SPECIFICHE / TECHNICAL FEATURES SPECIFICATIONS

	DIN 51130 (R)	DIN 51097 (A+B+C)	BCR REP. CEC 6/81		DM 14/6/89 N. 236		PENDULUM TEST BS (INGLESE)	PENDULUM TEST AS/NZS 4856:2004 (AUSTRALIANO)	PENDULUM TEST UNE ENV 12633:2003 (SPAGNOLO)	BOT 3000 (DCOF)  AVERAGE VALUE
			G.A.	G.B.	C.A.	G.B.				
STCR	R10	A+B	>0.4	>0.4	>0.4	>0.4	>36	>35	2	>0,42
STCR1-2	R10	B+C	>0.4	>0.4	>0.4	>0.4	>36	>45	3	>0,42



STCR1 12CG RM

Non poteva mancare per Imola, brand contemporaneo che soddisfa ogni esigenza di stile e di funzionalità, l'inserimento in gamma, per tutti i propri progetti best seller, di nuovi articoli per gli spazi esterni.

Una scelta in linea con le ultime esigenze dell'abitare e del gardening, ove al tradizionale gres porcellanato da esterno a spessore normale, la proposta si completa con l'alto spessore 20 mm e da nuovi pezzi speciali, diversificati, per specifici utilizzi.

La soluzione ideale per realizzare camminamenti, terrazze, patii e altre soluzioni progettuali nei pressi di giardini, cortili, piscine e altri contesti di outdoor design.

Sinonimo di alte performance tecniche, quali la durezza e le proprietà meccaniche, completamente privo di porosità e ingelivo, il 20 mm è un prodotto facilmente pulibile, solido, ecosostenibile, dallo stile dinamico e contemporaneo, disponibile in una gamma ampia e diversificata di soluzioni estetiche, di colori e di formati.

#### I VANTAGGI DEL 20 MM.

- \_ Monolitico.
- \_ Ecosostenibile.
- \_ Igienico.
- \_ Ignifugo.
- \_ Ingelivo.
- \_ Antiscivolo.
- \_ Resistente all'usura.
- \_ Resistente agli attacchi chimici.
- \_ Resistente ai carichi di rottura.
- \_ Resistente agli sbalzi termici.
- \_ Resistente alle macchie.
- \_ Inattaccabile da muffe e muschi.
- \_ Facile da pulire.
- \_ Facile da posare.
- \_ Facile da rimuovere.

A must for Imola, the modern brand that meets with every style and practicality requirement just had to add new items for outside areas to its range, for all its best seller projects.

A choice made in line with the latest living and gardening demands, where the traditional porcelain stoneware for outside use with a normal thickness is completed with the thicker 20 mm proposal and new special, diversified pieces for specific purposes.

The ideal solution for walkways, terraces, patios and other projects around gardens, courtyards, swimming pools and other outdoor design solutions.

Synonymous with high tech. performance such as being long lasting and its mechanical features, completely porosity-free and frost-proof, the 20 mm product can be cleaned easily, is solid, eco-sustainable with a dynamic, modern style, available in a vast and varying range of aesthetic solutions, colours and shapes.

#### ADVANTAGES OF THE 20 MM.

- \_ Monolithic.
- \_ Eco-sustainable.
- \_ Hygienic.
- \_ Fireproof.
- \_ Frost-proof.
- \_ Skid-proof.
- \_ Resistant to wear.
- \_ Resistant to chemical corrosion.
- \_ Resistant to tensile strength.
- \_ Resistant to sudden changes in temperature.
- \_ Stain resistant.
- \_ Resistant to mould and moss.
- \_ Easy to clean.
- \_ Easy to lay.
- \_ Easy to remove.

OUTDOOR

10 mm

THICKNESS

20 mm







GRES PORCELLANATO A MASSA COLORATA  
COLOURED BODY PORCELAIN TILE

10mm					20mm			
<p>60X120-24"x48"    90X90-36"x36"    60X60-24"x24"    30X60-12"x24"</p>					<p>60X120-24"x48"    60X60-24"x24"</p>			
CG	STCR R12CG RM	STCR R90CG RM	STCR R60CG RM	STCR R36CG RM	CG	STCR 12CG AS RM	STCR 60CG AS RM	
AG	STCR R12AG RM	STCR R90AG RM	STCR R60AG RM	STCR R36AG RM				
G	STCR R12G RM	STCR R90G RM	STCR R60G RM	STCR R36G RM	G	STCR 12G AS RM	STCR 60G AS RM	
DG	STCR R12DG RM	STCR R90DG RM	STCR R60DG RM	STCR R36DG RM	DG	STCR 12DG AS RM	STCR 60DG AS RM	

## 10 PEZZI SPECIALI / SPECIAL PIECES

<p>30X60-12"x24" △    20X60X4-8"x24"x2" △</p>				
CG	STCR S R60CG	STCR E R60CG		
AG	STCR S R60AG	STCR E R60AG		
G	STCR S R60G	STCR E R60G		
DG	STCR S R60DG	STCR E R60DG		

## CARATTERISTICHE TECNICHE SPECIFICHE / TECHNICAL FEATURES SPECIFICATIONS

	DIN 51130 (R)	DIN 51097 (A+B+C)	BCR REP. CEC 6/81		DM 14/6/89 N. 236		PENDULUM TEST BS (INGLESE)	PENDULUM TEST AS/NZS 4856:2004 (AUSTRALIANO)	PENDULUM TEST UNE ENV 12633:2003 (SPAGNOLO)	BOT 3000 (DCOF)
			G.A.	G.B.	C.A.	G.B.				
STCR R	R11	B+C	>0.4	>0.4	>0.4	>0.4	>36	>45	3	>0,42
STCR AS	R11	B+C	>0.4	>0.4	>0.4	>0.4	>36	>45	3	>0,42

## 20 PEZZI SPECIALI / SPECIAL PIECES

<p>SQUARE BORDER* costa lucida SQUARE BORDER* polished edge 60X60-24"x24" △</p> <p>GRADONE costa lucida TERRACE polished edge 33X60-13"x24" △</p> <p>GRADONE costa lucida TERRACE polished edge 33X120-13"x48" △</p> <p>ELEMENTO A ELLE L-SHAPED 30x60x5-12"x24"x2" △</p> <p>STEP righe costa lucida STEP stripes polished edge 30X60-12"x24" △</p> <p>ALZATA gocciolatoio RISE dripstone 20X60-8"x24" △</p> <p>ALZATA gocciolatoio RISE dripstone 20X120-8"x48" △</p>				
CG	STCR SB60CG AS	STCR GR336CG AS	STCR GR120CG AS	
G	STCR SB60G AS	STCR GR336G AS	STCR GR120G AS	
DG	STCR SB60DG AS	STCR GR336DG AS	STCR GR120DG AS	
CG	STCR L 60CG AS	STCR S60CG AS	STCR AZ60CG AS	STCR AZ120CG AS
G	STCR L 60G AS	STCR S60G AS	STCR AZ60G AS	STCR AZ120G AS
DG	STCR L 60DG AS	STCR S60DG AS	STCR AZ60DG AS	STCR AZ120DG AS
<p>TOP gocciolatoio coste lucide TOP dripstone polished edges 30X60-12"x24" △</p> <p>BORDO PISCINA* costa lucida POOL EDGE* polished edge 30X60-12"x24" △</p> <p>GRIGLIA PISCINA* POOL GRILLE* 20X60-8"x24" △</p>				
CG	STCR TOP60CG AS	STCR BP60CG AS	STCR GP60CG AS	
G	STCR TOP60G AS	STCR BP60G AS	STCR GP60G AS	
DG	STCR TOP60DG AS	STCR BP60DG AS	STCR GP60DG AS	

\* Angolari DX e SX disponibili a richiesta. / \* RH and LH angle bracket available on request.

I pezzi speciali ed i fondi possono presentare leggere differenze di tonalità fra di loro.  
Special pieces and backgrounds can have slightly different shades from one another.

Il bordo può mostrare una piccola diversità cromatica fra la superficie ed il corpo del pezzo ceramico.  
There can be a slight colour difference on the edge between the surface and the main ceramic piece.



**wall tile**



STCRWA1 36DG RM





# STONCRETE



BICOTTURA DA RIVESTIMENTO  
DOUBLE-FIRED WALL TILE

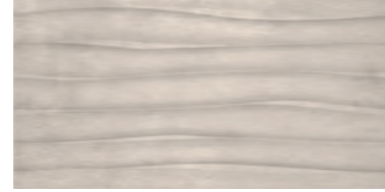
ISO 13006 - G - BIII GL (E ≥ 10%) UNI EN 14411 - L



STCRWA 36CG RM  
30X60-12"X24"



STCRWA1 36CG RM  
30X60-12"X24"



STCRWA2 36CG RM  
30X60-12"X24"



STCRWA 36AG RM  
30X60-12"X24"



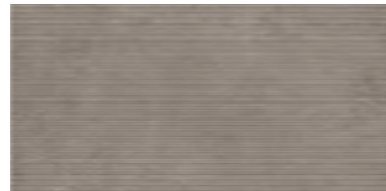
STCRWA1 36AG RM  
30X60-12"X24"



STCRWA2 36AG RM  
30X60-12"X24"



STCRWA 36G RM  
30X60-12"X24"



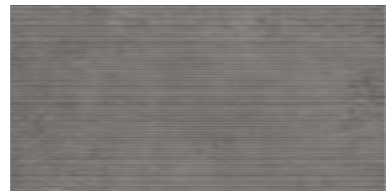
STCRWA1 36G RM  
30X60-12"X24"



STCRWA2 36G RM  
30X60-12"X24"



STCRWA 36DG RM  
30X60-12"X24"



STCRWA1 36DG RM  
30X60-12"X24"



STCRWA2 36DG RM  
30X60-12"X24"



# Caratteristiche Tecniche Gres Porcellanato

## Technical Specifications Porcelain Stoneware

UNI EN 14411 (ISO 13006) - Bla (appendice/appendix G)

CARATTERISTICA Specification	METODO DI PROVA Test methods	REQUISITI PREVISTI DALLA NORMA Requirements in accordance to the standards	VALORE MEDIO Average value
<b>DIMENSIONI E ASPETTO</b> DIMENSIONS AND APPEARANCE	ISO 10545-2	PROSPETTO G.1 PROSPECT G.1	CONFORME COMPLIANT
<b>ASSORBIMENTO D'ACQUA</b> WATER ABSORPTION	ISO 10545-3	≤ 0,5%	< 0,1%
<b>RESISTENZA A FLESSIONE</b> FLEXURAL RESISTANCE		min./МИН 35 N/mm <sup>2</sup>	> 45 N/mm <sup>2</sup>
<b>SFORZO DI ROTTURA</b> MODULUS OF RUPTURE	ISO 10545-4	<b>SPESSORE / THICKNESS</b> ≥ 7,5 mm: min. 1300N	6,5 mm 1800 N* <b>SPESSORE* / THICKNESS*</b> 10 mm 3000 N* 20 mm 13000 N*
<b>RESISTENZA ALL'ABRAZIONE PROFONDA</b> DEEP ABRASION RESISTANCE	ISO 10545-6	≤ 175 mm <sup>3</sup>	< 140 mm <sup>3</sup>
<b>RESISTENZA ALL'ABRAZIONE SUPERFICIALE</b> RESISTANCE TO SURFACE ABRASION	ISO 10545-7	CLASSI 0-5 CLASSES 0-5	COME INDICATO IN CATALOGO AS INDICATED IN THE CATALOGUE
<b>COEFFICIENTE DILATAZIONE TERMICA LINEARE (α)</b> LINEAR EXPANSION THERMIC COEFFICIENT	ISO 10545-8	METODO DISPONIBILE AVAILABLE ON REQUEST	≤ 7x10 <sup>-6</sup> °C <sup>-1</sup>
<b>RESISTENZA AGLI SBALZI TERMICI</b> RESISTANCE TO SUDDEN TEMPERATURE CHANGES	ISO 10545-9	METODO DISPONIBILE AVAILABLE ON REQUEST	RESISTE RESISTANT
<b>RESISTENZA AL GELO</b> FROST RESISTANCE	ISO 10545-12	RICHIESTA ALWAYS TESTED	RESISTE RESISTANT
<b>PRODOTTI CHIMICI AD USO DOMESTICO ED ADDITIVI PER PISCINA</b> HOUSEHOLD CHEMICALS AND SWIMMING POOL WATER CLEANSERS		min. B МИН. B	min. B МИН. B
<b>ACIDI ED ALCALI A BASSA CONCENTRAZIONE</b> ACIDS AND LOW CONCENTRATION ALKALIS	ISO 10545-13	DA LA, LB, A LC FROM LA, LB TO LC	DA LA, LB, A LC FROM LA, LB TO LC
<b>ACIDI ED ALCALI AD ALTA CONCENTRAZIONE</b> ACIDS AND HIGH CONCENTRATION ALKALIS		METODO DISPONIBILE AVAILABLE ON REQUEST	METODO DISPONIBILE AVAILABLE ON REQUEST
<b>RESISTENZA ALLE MACCHIE UGL</b> STAIN RESISTANCE UGL		METODO DISPONIBILE AVAILABLE ON REQUEST	METODO DISPONIBILE AVAILABLE ON REQUEST
	ISO 10545-14		
<b>RESISTENZA ALLE MACCHIE GL</b> STAIN RESISTANCE GL		min. 3 МИН. 3	min. 3 МИН. 3

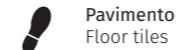
\* VALORI RIFERITI AL FORMATO 60X60 / VALUES REFERRED TO 60X60 SIZE

# Symbologia

## Symbols

### INDICAZIONI D'USO

#### INDICATIONS FOR USE



**Pavimento**  
Floor tiles



**Rivestimento**  
Wall tiles

### DESTINAZIONI D'USO

#### SUGGESTED APPLICATIONS



**Abitazioni**  
Domestic purpose



**Commerciale leggero**  
Light commercial



**Commerciale**  
Commercial



**Esterni**  
Outdoor floor

### SUPERFICI

#### SURFACES

**Struttura**  
Structure



**Strutturato**  
Slate cut



**Bocciardato**  
Bush-hammered rustic

**Finitura**  
Finish



**Naturale**  
Natural

### Aspetto superficiale

#### Surface look



**Opaco**  
Matt

**Bordo**  
Edge



**RM**  
Rettificato monocalibro  
Monocaliber, rectified

### STONALIZZAZIONE

#### SHADE VARIATION



### SPESSORE

#### THICKNESS



### CARATTERISTICHE DI VENDITA

#### SALES CHARACTERISTICS



**Prodotto venduto al pezzo.**  
Product sold per item.

Tutti i nostri prodotti, sia al mq che al pezzo, sono venduti unicamente a scatola completa.  
All our products are sold only in complete boxes, whether the unit of measure is per item or per square metre.

# Caratteristiche Tecniche Bicottura

## Double Firing Technical Specifications

UNI EN 14411 (ISO 13006) - BIII (appendice L)



imolaceramica.com

Coordinamento  
Marketing CC Imola

CARATTERISTICA Specification	METODO DI PROVA Test methods	REQUISITI PREVISTI DALLA NORMA Requirements in accordance to the standards	VALORE MEDIO Average value
 <b>DIMENSIONI E ASPETTO</b> DIMENSIONS AND APPEARANCE	ISO 10545-2	<b>PROSPETTO L1</b> PROSPECT L1	<b>CONFORME</b> COMPLIANT
 <b>ASSORBIMENTO D'ACQUA</b> WATER ABSORPTION	ISO 10545-3	> 10%	> 10%
 <b>RESISTENZA A FLESSIONE</b> FLEXURAL RESISTANCE	ISO 10545-4	<b>SPESSORE / THICKNESS</b> ≥ 7,5 mm: min. 12 N/mm <sup>2</sup> <b>SPESSORE / THICKNESS</b> < 7,5 mm: min. 15 N/mm <sup>2</sup>	>17 N/mm <sup>2</sup>
<b>SFORZO DI ROTTURA</b> MODULUS OF RUPTURE		<b>SPESSORE / THICKNESS</b> ≥ 7,5 mm: min. 600 N <b>SPESSORE / THICKNESS</b> < 7,5 mm: min. 200 N	<b>CONFORME</b> COMPLIANT
 <b>COEFFICIENTE DILATAZIONE TERMICA LINEARE (A)</b> LINEAR EXPANSION THERMIC COEFFICIENT	ISO 10545-8	<b>METODO DISPONIBILE</b> AVAILABLE ON REQUEST	≤ 7x10 <sup>-6</sup> °C <sup>-1</sup>
 <b>RESISTENZA AGLI SBALZI TERMICI</b> RESISTANCE TO SUDDEN TEMPERATURE CHANGES	ISO 10545-9	<b>METODO DISPONIBILE</b> AVAILABLE ON REQUEST	<b>RESISTE</b> RESISTANT
<b>RESISTENZA AL CAVILLO</b> CRAZING RESISTANCE	ISO 10545-11	<b>RICHIESTA</b> ALWAYS TESTED	<b>RESISTE</b> RESISTANT
 <b>PRODOTTI CHIMICI AD USO DOMESTICO ED ADDITIVI PER PISCINA</b> HOUSEHOLD CHEMICALS AND SWIMMING POOL WATER CLEANSERS		min. B МИН. В	min. B МИН. В
<b>ACIDI ED ALCALI A BASSA CONCENTRAZIONE</b> ACIDS AND LOW CONCENTRATION ALKALIS	ISO 10545-13	<b>METODO DISPONIBILE</b> AVAILABLE ON REQUEST	<b>METODO DISPONIBILE</b> AVAILABLE ON REQUEST
<b>ACIDI ED ALCALI AD ALTA CONCENTRAZIONE</b> ACIDS AND HIGH CONCENTRATION ALKALIS		<b>METODO DISPONIBILE</b> AVAILABLE ON REQUEST	<b>METODO DISPONIBILE</b> AVAILABLE ON REQUEST
 <b>RESISTENZA ALLE MACCHIE</b> STAIN RESISTANCE	ISO 10545-14	min. 3 МИН. 3	min. 3 МИН. 3

## Symbologia

### Symbols

#### INDICAZIONI D'USO

INDICATIONS FOR USE

 Rivestimento  
Wall tiles

#### DESTINAZIONI D'USO

SUGGESTED APPLICATIONS

 Abitazioni  
Domestic purpose

#### SUPERFICI

SURFACES

Struttura / Structure

**ST** Strutturato  
Slate cut

Finitura / Finish

**N** Naturale  
Natural

Aspetto superficiale / Surface look

 Opaco  
Matt

#### STONALIZZAZIONE

SHADE VARIATION

**V2**  


#### SPESSORE

THICKNESS

**9,8**  




A brand of  
Cooperativa Ceramica d'Imola S.c.

Via V. Veneto, 13  
40026 Imola (BO) Italia  
Tel. +39 0542 601601  
Fax +39 0542 31749

